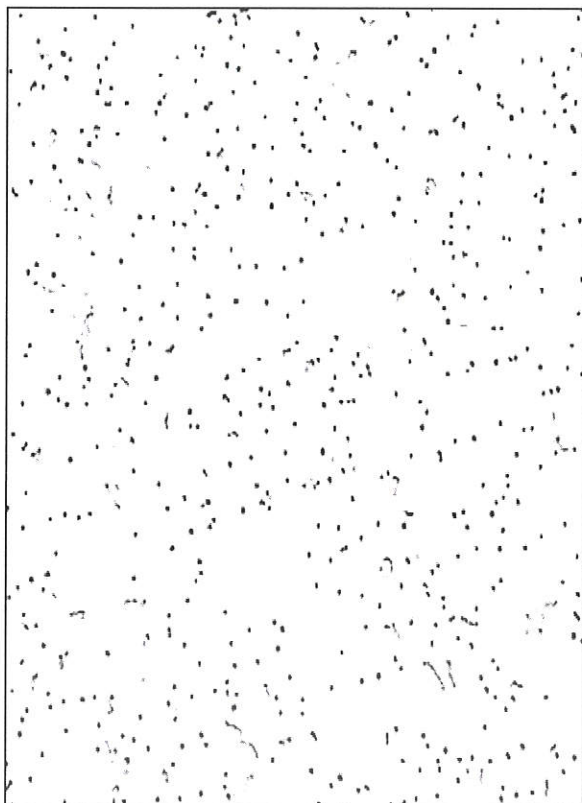


New NDF (MN) – RH 99



Moisture Content
2% - JIS A 6301

Modulus Of Rupture
17kgf/m² - JIS A 6301

Flame Spread / Fire Resistance
US: Class A Flame Spread 25 or under
BS 476 Part 6 & 7 : Class 0 / Class 1

Thermal Conductivity
0.045kcal/mh°C

Light Reflectance
0.80 & above

Sound Absorption Coefficient
5/8: NRC : 0.6


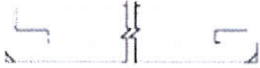



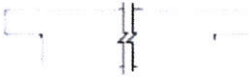

Ceiling Attenuation Class
CAC : 36

Guaranteed
10 years against visible sagging

Country Origin
Made In Japan

Physical Data

Product Specification

Excel-Tone MR	Thickness	Standard Size	Edges	
Exposed Board	1/2" , 5/8"	24" X 24" (O.C) 24" X 48" (O.C) 600mm x 600mm (O.C) 600mm x 1200mm (O.C)	 4 Sides: Square Edge	
Semi-Concealed Board	15mm	400 x 1500mm 500 x 1500mm Customized Sizes	 Long Sides: Kerf and Rabbet, Square or Beveled Edge	 Short Sides: Trimmed
Shiplap Board	15mm	400 x 1500mm 500 x 1500mm Customized Sizes	 Long Sides: Shiplap, Beveled Edge	 Short Sides: Trimmed
Revealed Board	5/8"	24" X 24" (O.C)R 24" X 48" (O.C)R 600mm x 600mm (O.C)R 600mm x 1200mm (O.C)R	 4 Sides: Revealed Edge	
Slim-line Board	5/8"	24" X 24" (O.C)NR 24" X 48" (O.C)NR 600mm x 600mm (O.C)NR 600mm x 1200mm (O.C)NR	 4 Sides: Slim-Line Revealed Edge	